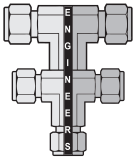


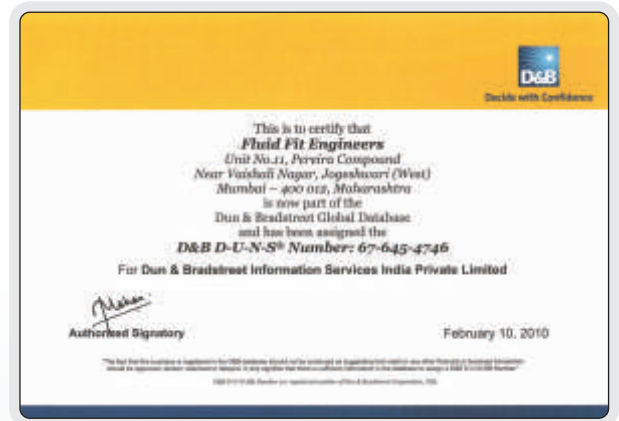


TWIN FERRULE FITTINGS



FLUIDLOK

TWIN FERRULE FITTINGS



PRODUCT RANGE

Fitting Series:

- Precision pipe fittings and Adaptors
- Twin Ferrule fittings
- 37° Flared tube fittings
- Hydraulic Fittings (DIN 2353)

Valves Series:

- Needle Valves
- Manifold & Mono-flange Valves
- Instrumentation Ball Valves
- Relief valves, Bleed Valves, Check Valves

Accessories:

- Condenser Pot
- Air Header Distributor
- Gauge Cock, Gauge Saver,
- Fittings Claps



page 02-06	TECHNICAL INFORMATION Service & Application Tube Fittings & Installation Material & Thread Specification Pressure Rating & Leakage Ordering Information	page 18	FEMALE ELBOW Fractional to NPT Thread Metric to NPT Thread
page 07	UNION Fractional to Fractional Metric to Metric Metric to Fractional	page 19	UNION TEE Fractional to Fractional Metric to Metric
page 08	REDUCING UNION Fractional to Fractional Metric to Metric		REDUCING UNION TEE Fractional to Fractional Metric to Metric
	BULKHEAD UNION Fractional to Fractional Metric to Metric	page 20	MALE BRANCH TEE Fractional to NPT Thread Metric to NPT Thread
page 09-10	MALE CONNECTOR Fractional to NPT Thread Metric to NPT Thread Metric to ISO Parallel / RS Thread Fractional to ISO Parallel / RS Thread		MALE RUN TEE Fractional to NPT Thread Metric to NPT Thread
page 11	BULKHEAD MALE CONNECTOR Fractional to NPT Thread Metric to NPT Thread	page 21	FEMALE BRANCH TEE Fractional to NPT Thread Metric to NPT Thread
page 11-12	WELD CONNECTOR Fractional to Male Pipe Weld Metric to Male Pipe Weld Fractional to Tube Socket Weld		FEMALE RUN TEE Fractional to NPT Thread Metric to NPT Thread
page 12-13	FEMALE CONNECTOR Fractional to NPT Thread Metric to Fractional Fractional to ISO Tapered / RT Thread Metric to ISO Tapered / RT Thread Fractional to ISO Parallel / RS Thread Metric to ISO Parallel / RS Thread	page 22	UNION CROSS Fractional to Fractional Metric to Metric
page 14	REDUCER Fractional / Metric Metric to Fractional	page 23	TUBE ADAPTER MALE Fractional to NPT Thread Metric to NPT Thread Fractional to ISO Tapered / RT Thread Metric to ISO Tapered / RT Thread
page 15	UNION ELBOW Fractional to Fractional Metric to Metric	page 24	TUBE ADAPTER FEMALE Fractional to NPT Thread Metric to NPT Thread Fractional to ISO Tapered / RT Thread Metric to ISO Tapered / RT Thread Fractional to ISO Parallel / RS Thread Metric to ISO Parallel / RS Thread
	MALE 45° ELBOW Fractional to NPT Thread	page 25	PORT CONNECTOR Fractional / Metric
page 16-17	MALE ELBOW Fractional to NPT Thread Metric to NPT Thread Fractional to ISO Tapered / RT Thread Metric to ISO Tapered / RT Thread	page 26	NUT Fractional / Metric
			FRONT FERRULE Fractional / Metric
			BACK FERRULE Fractional / Metric

INTRODUCTION

FLUIDLOK series consists of complete products of Compression Tube fittings. This range has been designed and manufactured for typical application in chemical and petrochemical plants, as well as oil, gas and power generation industries. This fully illustrated catalogue contains detailed engineering information, dimensional data and the part numbering system.

VISION

Our vision is to set highest standards of customer satisfaction, product development, manufacture, delivery and in all other domains of our business and be the industry leader globally. Continually improving upon the quality of our products & services, we endeavor to create value for our customers. FLUIDFIT ENGINEERS PVT. LTD. is a fastest growing manufacturing unit of Instrumentation Fittings FLUIDLOK Product Quality you can trust.

INDUSTRIES, WE SERVE...

Due to above mentioned salient features of our range, we cater to the requirements of varied industries, where our products are widely used. These are Industrial Mining, Marine, Oil & Gas, Hydraulics & Pneumatics, Power Generation & Energy, Fertilizers, Semi Conductors, Food & Beverages, Nuclear Plants, Pharmaceuticals, Pulp & Paper, Water Systems, Refineries, Printing & Packaging, Our years of expertise and experience in the industry enable us in offering the products as per the specific requirements of our clients. We ensure that we meet the specifications of our clients on varied technical, mechanical and chemical parameters.

QAULTY ASSURANCE

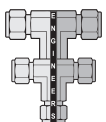
We lay complete emphasis on the quality of our products at each stage of the production process. Our quality conscious approach has enabled us in achieving ISO certifications, which is testimony for our quality. Our in house quality check lab ensures to check the quality of our products on the following : physical, mechanical and technical aspects like- 'Material Composition Test, Tensile Test, Non Destructive Tests and Torque Test

SERVICE

We work closely with our customers to optimize integration of product design and manufacturing processes to minimize costs and deliver customized products & services. Through our systems engineering experience, we are able to streamline processes and meet the specific requirements of our client within the stipulated time We have a long history of manufacturing crucial material and shipping them around the globe. We have a record of delivering of our consignments on-time to our customers based in, Denmark, Germany Italy, Middle East, UK, USA etc.

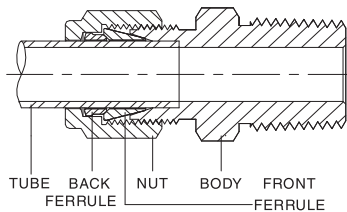
APPLICATION

Oil & Gas Industries: From exploration through refining, from crude oil through high octane fuel, the oil and gas industry requires the highest level of flow control components to achieve the high standards of reliability, corrosion resistance, vibration, temperature cycles and pressure surges. Offshore rigs, refinery plants and gas handling systems are all highly sensitive to reliability and safety issues. FLUIDLOK products for the industrial applications are designed to meet and exceed these standards.

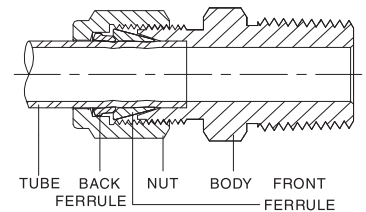


TUBE FITTINGS

FLUIDLOK double ferrule fittings are available in stainless steel, alloy steel, carbon steel, brass, monel, titanium, hastelloy, inconel or other alloys based as per client requirements. These double ferrule fittings are used in process control as well as hydraulic and pneumatic applications in industries like chemical, petrochemical, fertilizer, offshore, power plants, etc. We have double ferrule fitting in standard and customized sizes and nominal bore sizes with variety of end connections. These double ferrule fittings are designed and developed as per the international quality standards like ASTM, BS, BIS, etc. FLUIDLOK Double ferrule Tube Fittings are designed, manufactured, and quality controlled and Product provide a reliable, leak-proof connection in instrumentation and process tubing systems. The double ferrule design, with the staged sequential swaging action of the ferrules during make-up, Back ferrule make a grip on tube & front ferrule work as sealing on tube, compensates for the variation in tubing materials. Hardness and thickness of the tube wall to provide leak-tight connections in an extensive range of applications.



Internal Tube Fitting before make-up



Internal Tube Fitting after make-up

- Front ferrule creates a seal on the tubing and fitting body.
- Back ferrule radially provides a grip on the tubing.
- Nut threads are silver plated to eliminate galling.

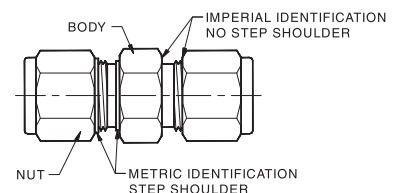
FEATURES

When the nut is tightened, the back ferrule is driven against the tapered rear of the front ferrule. The front ferrule is driven by force into the tapered mouth of the fitting body and creates a primary tubing seal. The back ferrule consistently grips the tube to hold the fitting and tubing firmly in place while the front ferrule forms a full -faced seal on the tapered surface of the body. In the twin-ferrule tube fitting design, the back and front ferrules move axially instead of a rotary motion. No torque is transferred to the tubing during installation.

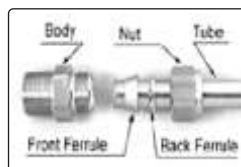
IDENTIFICATION

METRIC & IMPERIAL FITTING

Metric tube fittings have a stepped shoulder on the body hex.



INSTALLATION



Make sure all components have been assembled in correct order as shown above.



Firmly insert the tubing into the fitting assembly until the tubing is fully bottomed on the shoulder inside the fittings.



Mark the nut at position no.1 to facilitate counting the number of turns. When holding the body of the fitting with a wrench prevent body from turning, tighten the nut with another wrench 1.1/4 turns to position no.2

- Easy to install.
- No torque is transmitted to tubing during installation.
- Gap inspection gauge assures sufficient pull-up upon initial installation. Tube fitting components provide exceptional dimensional, metallurgical, and mechanical uniformity that allow predictable, repeatable installation.

Warning for Your Safety

The system designer and user have the sole responsibility to select products suitable for their special application requirements to ensure the proper installation. Operation and maintenance of the product. Application details, material compatibility and product ratings should all be considered in the individual selection. Improper selection or use of products can cause property damage or personal injury. FLUIDLOK accept no liability for any improper selection, installation, operation or maintenance.

TWIN FERRULE FITTINGS

Technical Information

MATERIALS STANDARDS

Material	Bar Stock	Forgings
316 Stainless Steel	ASTM A276,	ASTM A182,
316 Stainless Steel	ASME Sa479, EN 1.4401	ASME SA182, EN 1.4401
Alloy 20	ASTM B473	ASTM B462
Alloy 400/ R-405	ASTM B164, ASMESB164	ASTM B564, ASME SB564
Alloy 600	ASTMB166,ASMESB166	ASTM B564, ASME SB564
Alloy 625	ASTM B446	ASTM B564, ASME SB564
Alloy 825	ASTM B425	ASTM B564, ASME SB564
Alloy C-276	ASTM B574	ASTM B564
Aluminum	ASTM B211	ASTM B247
Brass	ASTMB16.ASTM B453	ASTM B283
Carbon steel	ASTM A108	-
Nylon	ASTM D4066	-
PTFE	ASTM D1710	ASTM D3294
Titanium(grad-4)	ASTM B348	ASTM B381

Bar Stock - Straight fittings and Tube adapters.

Forging - Elbows, Crosses, and Tees.

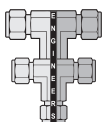
THREAD SPECIFICATIONS

Thread Type (End Connection)	Reference Specification
NPT	ASME B1.20.1, SAE AS71051
ISO/BSP (parallel) (Based on DIN 3852) (PR, RP, and RS fittings)	ISO 228, JIS B0202
ISO/BSP (tapered) (Based on DIN 3852) (RT fittings)	ISO 7, BS EN 10226-1, JIS B0203
ISO/BSP (gauge) (Based on EN 837-1 and 837-3) (RG and RJ fittings)	ISO 228, JIS B0202
Unified (SAE) (ST fittings)	ASMEB1.1

PRESSURE RATINGS

Ratings are based on ASME Code for Pressure Piping B31.3, Process Piping, at ambient temperature.

NPT / ISO	316 SS & Carbon Steel				Brass			
	Male		Female		Male	Female		
Pipe Size(in)	psig	bar	psig	bar	psig	bar	psig	bar
1/16	11000	760	6700	460	5500	380	3300	230
1/8	10000	690	6500	440	5000	340	3200	220
1/4	8000	550	6600	450	4000	270	3300	220
3/8	7800	540	5300	360	3900	270	2600	180
1/2	7700	530	4900	330	3800	260	2400	160
3/4	7300	500	4600	320	3600	250	2300	160
1	5300	370	4400	300	2600	180	2200	150



SAE/MS PRESSURE RATINGS

SAE/MS Thread Size	316 SS & Carbon Steel			
	Non positionable		Positionable	
	Psig	Bar	Psig	Bar
5/16-24	4568	315	4568	315
7/16-20	4568	315	4568	315
1/2-20	4568	315	4568	315
9/16-18	4568	315	3626	250
3/4-16	4568	315	3626	250
7/8-14	3626	250	2900	200
1.1/16-12	3626	250	2900	200
1.3/16-12	2900	200	2900	200
1.5/16-12	2900	200	2900	200
1.5/8-12	2320	160	1813	125
1.7/8-12	2320	160	1813	125
2.1/2-12	1813	125	1450	100

PIPE END (NPT and ISO 7) basis Pressure ratings for fittings with both tube fitting and pipe thread ends are determined by the end connection with the lower pressure rating. The table lists pressure ratings for male and female tapered pipe thread ends. For female and male pipe threads to have the same pressure rating in the same nominal pipe size, the female thread would require a heavier wall, resulting in a fitting too large and bulky to be practical. Tube fitting ends are rated to the working pressure of tubing as listed in Tubing Data, MS-01-107. Careful selection of high-quality tubing is important when installing safe, leak-tight systems.

ALLOWABLE STRESS

Stress values are based on ASME Code for Pressure Piping B31.3, Process Piping, at ambient temperature.

Material	Allowable Stress	
	psi	bar
316 SS	20000	1378
Brass	10000	689
Steel	20000	1378

LEAKAGE

Excellent gas-tight sealing and consistent reassembly help ensure accurate measurements of process parameters—air, steam, fuel, and water to keep your plant operating efficiently. Moreover, tube fittings minimize fugitive emissions, as well as process fluid leakage and operation costs.

ORDERING INFORMATION

FLUID LOK fittings are ordered by part number as listed in this catalogue.

ABBREVIATION

Female Thread Type	Male Thread Type	Hex Across Flat
F	M	F
Imperial (Inch)	Metric (Millimeter)	
in	mm	

MATERIAL

Stainless Steel 304 / 316 / 316L	Carbon Steel	Brass	Aluminium
S / SS / SSL	CS	B	AL

SIZE : The thread size is written as a fraction eg. 1/4 NPT= 4N.

PIPE THREAD SIZE DESIGNATOR

Nom. Size	1/8"	1/4"	3/8"	1/2"	3/4"	1"
Identifier	2	4	6	8	12	16

END CONNECTION THREADS

Thread Type	NPT Tread	ISO / BSP Parallel (BSPP)	ISO / BSP Tapered (BSPT)
Identifier	N	RS	RT

FITTING STYLE A letter or combination of letters and numbers are used to designate the type of fitting. Eg. MC = MALE CONNECTOR. Please see visual Index.

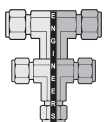
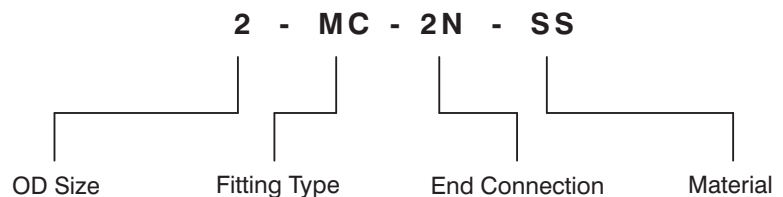
Fitting	Type	Fitting	Type
U	Union	UT	Union Tee
RU	Reducing Union	RUT	Reducing Union Tee
BU	Bulkhead Union	MBT	Male Branch Tee
MC	Male Connector	MRT	Male Run Tee
WCP	Weld Connector male Pipe	FBT	Female Branch Tee
BMC	Bulkhead Male Connector	FRT	Female Run Tee
WCS	Weld Connector tube Socket	UC	Union Cross
FC	Female Connector	MTA	Male Tube Adapter
R	Reducer	FTA	Female Tube Adapter
UE	Union Elbow	PC	Port Connector
ME	Male Elbow	N	Nut
FE	Female Elbow	FF	Front Ferrule
M45E	Male 45° Elbow	BF	Back Ferrule

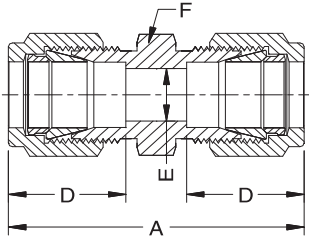
HOW TO ORDER

Select a FLUID-LOK Part Number. Example : 2-MC-2N-

Add a material designator. Example : 2-MC-2N-SS

All designator : OD Size - Fitting Type - End Connection - Material.





UNION Fractional to Fractional

FLUIDLOK	Tube	Dimensions (in)			
Part No.	OD	A	D	E	F
1-U-	1/16	0.99	0.34	0.05	5/16
2-U-	1/8	1.4	0.50	0.09	7/16
3-U-	3/16	1.47	0.54	0.12	7/16
4-U-	1/4	1.61	0.60	0.19	1/2
5-U-	5/16	1.69	0.64	0.25	9/16
6-U-	3/8	1.77	0.66	0.28	5/8
8-U-	1/2	2.02	0.90	0.41	13/16
10-U-	5/8	2.05	0.96	0.5	15/16
12-U-	3/4	2.11	0.96	0.62	1.1/16
14-U-	7/8	2.17	1.02	0.72	1.3/16
16-U-	1	2.55	1.23	0.88	1.3/8

UNION Metric to Metric

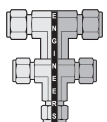
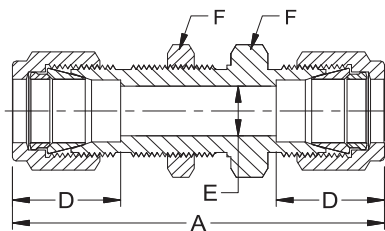
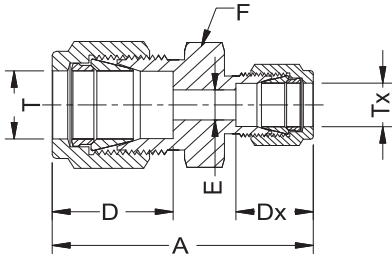


FLUIDLOK	Tube	Dimensions (mm)			
Part No.	OD	A	D	E	F
4M-U-	4	37.3	13.7	2.4	12
6M-U-	6	41	15.3	4.8	14
8M-U-	8	43.2	16.2	6.4	16
10M-U-	10	46.2	17.2	7.9	18
12M-U-	12	51.2	22.8	9.5	22
14M-U-	14	52	24.4	11.1	24
16M-U-	16	52	24.4	12.7	24
18M-U-	18	53.5	24.4	15.1	27
20M-U-	20	55	26	15.9	30
22M-U-	22	55	26	18.3	30
25M-U-	25	65	31.3	21.8	35

UNION Metric to Fractional

FLUIDLOK	Tube OD		Dimensions (mm)				
Part No.	T(mm)	Tx(in)	A	D	Dx	E	F
4M-U-2-	4	1/8	36.5	13.7	12.8	2.4	12
4M-U-4-	4	1/4	39.4	13.7	15.3	2.4	14
6M-U-2-	6	1/8	38.5	15.3	12.8	2.4	14
6M-U-4-	6	1/4	41.0	15.3	15.3	4.8	14
8M-U-2-	8	1/8	42.3	16.2	15.3	4.8	15
8M-U-4-	8	1/4	44.3	16.2	16.9	6.4	16
10M-U-4-	10	1/4	44.5	17.2	15.3	4.8	18
10M-U-6-	10	3/8	45.9	17.2	16.9	7.1	18
12M-U-6-	12	3/8	48.4	22.8	16.9	7.1	22
12M-U-8-	12	1/2	51.2	22.8	22.8	9.5	22
16M-U-10-	16	5/8	52.0	24.4	24.4	12.7	24
18M-U-12-	18	3/4	53.5	24.4	24.4	15.1	27
20M-U-8-	20	1/2	55.0	26.0	22.8	10.3	30
20M-U-16-	20	1	62.8	26.0	31.3	15.9	35
25M-U-16-	25	1	65.0	31.3	31.3	21.8	35

TWIN FERRULE FITTINGS



**FLUIDFIT
ENGINEERS PVT. LTD.**

REDUCING UNION Fractional to Fractional

FLUIDLOK Part No.	Tube OD		Dimensions (in)			
	T	Tx	A	D	Dx	E
4-RU-2-	1/4	1/8	1.52	0.6	0.5	0.09
4-RU-3-	1/4	3/16	1.55	0.6	0.54	0.12
6-RU-2-	3/8	1/8	1.61	0.66	0.5	0.09
6-RU-4-	3/8	1/4	1.7	0.66	0.6	0.19
8-RU-2-	1/2	1/8	1.78	0.9	0.5	0.09
8-RU-4-	1/2	1/4	1.85	0.9	0.6	0.19
8-RU-6-	1/2	3/8	1.91	0.9	0.66	0.28
12-RU-6-	3/4	3/8	2	0.96	0.66	0.28
12-RU-8-	3/4	1/2	2.11	0.96	0.9	0.41
16-RU-8-	1	1/2	2.38	1.23	0.9	0.41
16-RU-12-	1	3/4	2.38	1.23	0.96	0.62

REDUCING UNION Metric to Metric

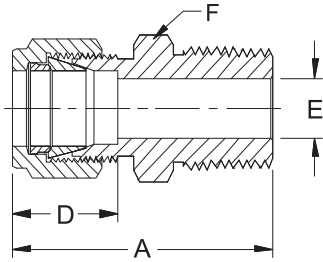
FLUIDLOK Part No.	Tube OD		Dimensions (mm)			
	T	Tx	A	D	Dx	E
6M-RU-4M-	6	4	39.4	15.3	13.7	2.4
8M-RU-6M-	8	6	42.3	16.2	15.3	4.8
10M-RU-8M-	10	8	45.1	17.2	16.2	6.4
12M-RU-8M-	12	8	47.8	22.8	16.2	6.4
12M-RU-10M-	12	10	48.7	22.8	17.2	7.9
16M-RU-10M-	16	10	45.9	24.4	17.2	7.9
16M-RU-12M-	16	12	52	24.4	22.8	9.5
18M-RU-12M-	18	12	53.5	24.4	22.8	9.5
25M-RU-18M-	25	18	61	31.3	24.4	15.1
25M-RU-20M-	25	20	62.3	31.3	26	15.9

BULKHEAD UNION Fractional to Fractional

FLUIDLOK Part No.	Tube		Dimensions (in)			Panel Hole Size	Max Panel Thk.
	OD	A	D	E	F		
4-BU-	1/4	2.27	0.60	0.19	5/8	29/64	0.40
6-BU-	3/8	2.45	0.66	0.28	3/4	37/64	0.44
8-BU-	1/2	2.80	0.90	0.41	15/16	49/64	0.50
10-BU-	5/8	2.86	0.96	0.50	11/16	57/64	0.50
12-BU-	3/4	3.11	0.96	0.62	13/16	11/64	0.66
16-BU-	1	3.77	1.23	0.88	15/8	1.21/64	0.75

BULKHEAD UNION Metric to Metric

FLUIDLOK Part No.	Tube		Dimensions (mm)			Panel Hole Size	Max Panel Thk.
	OD	A	D	E	F		
8M-BU-	8	61.0	16.2	6.4	18	13.1	11.2
10M-BU-	10	63.7	17.2	7.9	22	16.3	11.2
12M-BU-	12	71.0	22.8	9.5	24	19.5	12.7
14M-BU-	14	72.5	24.4	11.1	27	22.5	12.7
16M-BU-	16	72.5	24.4	12.7	27	22.8	12.7



MALE CONNECTOR Fractional to NPT Thread

FLUIDLOK	Tube	NPT	Dimensions (in)			
Part No.	OD	Thread	A	D	E*	F
2-MC-2N-	1/8	1/8	1.20	0.50	0.09	7/16
2-MC-4N	1/8	1/4	1.40	0.50	0.09	9/16
4-MC-2N	1/4	1/8	1.29	0.60	0.19	1/2
4-MC-4N	1/4	1/4	1.49	0.60	0.19	9/16
4-MC-6N	1/4	3/8	1.51	0.60	0.19	11/16
6-MC-4N	3/8	1/4	1.57	0.66	0.28	5/8
6-MC-6N	3/8	3/8	1.57	0.66	0.28	11/16
6-MC-8N	3/8	1/2	1.82	0.66	0.28	7/8
8-MC-4N	1/2	1/4	1.71	0.90	0.28	13/16
8-MC-6N	1/2	3/8	1.71	0.90	0.38	13/16
8-MC-8N	1/2	1/2	1.93	0.90	0.41	7/8
8-MC-12N-	1/2	3/4	1.99	0.90	0.41	11/16
12-MC-8N-	3/4	1/2	1.99	0.96	0.47	11/16
12-MC-12N-	3/4	3/4	1.99	0.96	0.62	11/16
12-MC-16N-	3/4	1	2.25	0.96	0.62	13/8
16-MC-8N-	1	1/2	2.26	1.23	0.47	13/8
16-MC-12N-	1	3/4	2.26	1.23	0.62	13/8
16-MC-16N-	1	1	2.45	1.23	0.88	13/8

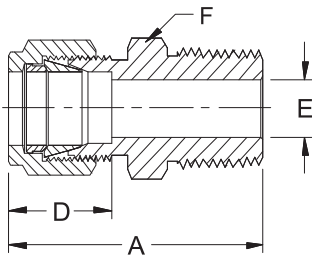
MALE CONNECTOR Metric to NPT Thread



FLUIDLOK	Tube	NPT	Dimensions (mm)			
Part No.	OD	Thread	A	D	E*	F
4M-MC-2N-	4	1/8	31.2	13.7	2.4	12
4M-MC-4N-	4	1/4	36.3	13.7	2.4	14
6M-MC-4N-	6	1/4	37.9	15.3	4.8	14
6M-MC-6N-	6	3/8	38.4	15.3	4.8	18
6M-MC-8N-	6	1/2	44.7	15.3	4.8	22
8M-MC-4N-	8	1/4	38.7	16.2	6.4	15
8M-MC-6N-	8	3/8	39.3	16.2	6.4	18
8M-MC-8N-	8	1/2	45.6	16.2	6.4	22
10M-MC-6N-	10	3/8	40.9	17.2	7.9	18
10M-MC-8N-	10	1/2	46.5	17.2	7.9	22
12M-MC-6N-	12	3/8	43.4	22.8	9.5	22
12M-MC-8N-	12	1/2	49.0	22.8	9.5	22
14M-MC-6N-	14	3/8	44.1	24.4	9.5	24
14M-MC-8N-	14	1/2	49.0	24.4	11.1	24
16M-MC-6N-	16	3/8	44.1	24.4	9.5	24
16M-MC-8N-	16	1/2	49.0	24.4	11.9	24
18M-MC-8N-	18	1/2	50.5	24.4	11.9	27
18M-MC-12N-	18	3/4	50.5	24.4	15.1	27

* The E dimension is the minimum nominal opening.
These fittings may have a larger opening at the pipe/straight thread end.

TWIN FERRULE FITTINGS



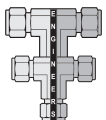
MALE CONNECTOR Metric to ISO Parallel / RS Thread

FLUIDLOK Part No.	Tube OD	BSP Thread	Dimensions (mm)			
			A	D	E*	F
4M-MC-2IP-	4	1/8	31.2	13.7	2.4	12
4M-MC-4IP-	4	1/4	36.3	13.7	2.4	14
6M-MC-4IP-	6	1/4	37.9	15.3	4.8	14
6M-MC-6IP-	6	3/8	38.4	15.3	4.8	18
6M-MC-8IP-	6	1/2	44.7	15.3	4.8	22
8M-MC-4IP-	8	1/4	38.7	16.2	6.4	15
8M-MC-6IP-	8	3/8	39.2	16.2	6.4	18
8M-MC-8IP-	8	1/2	45.6	16.2	6.4	22
10M-MC-6IP-	10	3/8	40.9	17.2	7.9	18
10M-MC-8IP-	10	1/2	46.5	17.2	7.9	22
12M-MC-6IP-	12	3/8	43.4	22.8	9.5	22
12M-MC-8IP-	12	1/2	49.0	22.8	9.5	22
14M-MC-6IP-	14	3/8	44.1	24.4	9.5	24
16M-MC-6IP-	16	3/8	44.1	24.4	9.5	24
16M-MC-8IP-	16	1/2	49.0	24.4	11.9	24
18M-MC-8IP-	18	1/2	50.5	24.4	11.9	27
18M-MC-12IP-	18	3/4	50.5	24.4	15.1	27
20M-MC-8IP-	20	1/2	52.3	26.0	11.9	30
20M-MC-12IP-	20	3/4	52.3	26.0	15.9	30
22M-MC-12IP-	22	3/4	52.3	26.0	15.9	30
22M-MC-16IP-	22	1	57.1	26.0	18.3	35
25M-MC-12IP-	25	3/4	57.5	31.3	15.9	35
25M-MC-16IP-	25	1	62.3	31.3	21.8	35

MALE CONNECTOR Fractional to ISO Parallel / RS Thread



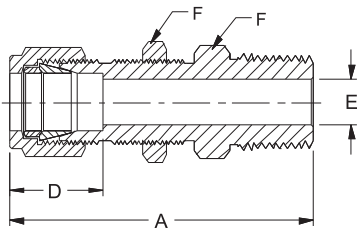
FLUIDLOK Part No.	Tube OD	BSP Thread	Dimensions (in)			
			A	D	E*	F
2-MC-2IP-	1/8	1/8	1.20	0.50	0.09	7/16
2-MC-4IP-	1/8	1/4	1.40	0.50	0.09	9/16
4-MC-2IP-	1/4	1/8	1.29	0.60	0.19	1/2
4-MC-4IP-	1/4	1/4	1.49	0.60	0.19	9/16
4-MC-6IP-	1/4	3/8	1.51	0.60	0.19	11/16
6-MC-6IP-	3/8	3/8	1.57	0.66	0.28	11/16
6-MC-8IP-	3/8	1/2	1.82	0.66	0.28	7/8
8-MC-6IP-	1/2	3/8	1.71	0.90	0.38	13/16
8-MC-8IP-	1/2	1/2	1.93	0.90	0.41	7/8
8-MC-12IP-	1/2	3/4	1.99	0.90	0.41	11/16
12-MC-12IP-	3/4	3/4	1.99	0.96	0.62	11/16
12-MC-16IP-	3/4	1	2.25	0.96	0.62	13/8
16-MC-12IP-	1	3/4	2.26	1.23	0.63	13/8
16-MC-16IP-	1	1	2.45	1.23	0.88	13/8



**FLUIDFIT
ENGINEERS PVT. LTD.**

* The E dimension is the minimum nominal opening.
These fittings may have a larger opening at the pipe/straight thread end.

TWIN FERRULE FITTINGS



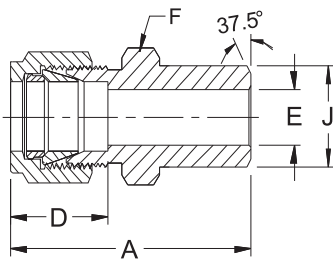
BULKHEAD MALE CONNECTOR Fractional to NPT Thread

FLUIDLOK	Tube	NPT	Dimensions (in)				Panel	Max Panel
Part No.	OD	Thread	A	D	E*	F	Hole Size	Thk.
4-BMC-4N-	1/4	1/4	2.12	0.60	0.17	5/8	29/64	0.40
6-BMC-6N-	3/8	3/8	2.25	0.66	0.28	3/4	37/64	0.44
8-BMC-8N-	1/2	1/2	2.59	0.90	0.39	15/16	49/64	0.50
12-BMC-12N-	3/4	3/4	3.11	0.96	0.61	13/16	11/64	0.66
16-BMC-16N-	1	1	3.64	1.23	0.84	15/8	1.21/64	0.75

BULKHEAD MALE CONNECTOR Metric to NPT Thread

FLUIDLOK	Tube	NPT	Dimensions (in)				Panel	Max Panel
Part No.	OD	Thread	A	D	E*	F	Hole Size	Thk.
6M-BMC-2N-	6	1/8	49.5	15.3	4.8	16	11.5	10.2
12M-BMC-8N-	12	1/2	68.8	22.8	9.5	24	19.5	12.7

WELD CONNECTOR Fractional to Male Pipe Weld



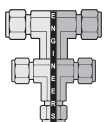
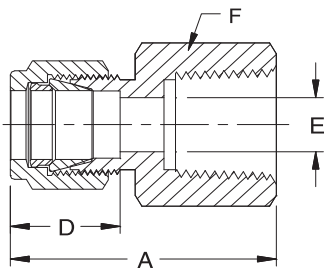
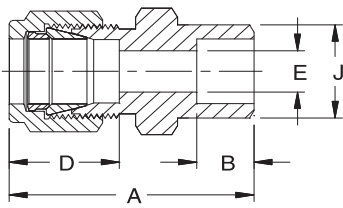
FLUIDLOK	Tube	Pipe Weld	Dimensions (in)				
Part No.	OD	size	A	D	E*	F	J
2-WCP-2-	1/8	1/8	1.20	0.50	0.09	7/16	0.405
4-WCP-2-	1/4	1/8	1.29	0.60	0.19	1/2	0.405
4-WCP-4-	1/4	1/4	1.49	0.60	0.19	9/16	0.540
6-WCP-6-	3/8	3/8	1.57	0.66	0.28	11/16	0.675
6-WCP-8-	3/8	1/2	1.82	0.66	0.28	7/8	0.840
8-WCP-6-	1/2	3/8	1.71	0.90	0.41	13/16	0.675
8-WCP-8-	1/2	1/2	1.93	0.90	0.41	7/8	0.840
8-WCP-12-	1/2	3/4	1.99	0.90	0.41	11/16	1.050
12-WCP-8-	3/4	1/2	1.99	0.96	0.55	11/16	0.840
12-WCP-12-	3/4	3/4	1.99	0.96	0.62	11/16	1.050
16-WCP-16-	1	1	2.45	1.23	0.88	13/8	1.315

WELD CONNECTOR Metric to Male Pipe Weld

FLUIDLOK	Tube	Pipe Weld	Dimensions (mm)				
Part No.	OD	size	A	D	E*	F	J
4M-WCP-2-	4	1/8	31.2	13.7	2.4	12	10.3
6M-WCP-4-	6	1/4	37.9	15.3	4.8	14	13.7
8M-WCP-4-	8	1/4	38.7	16.2	6.4	15	13.7
8M-WCP-8-	8	1/2	45.6	16.2	6.4	22	21.3
10M-WCP-6-	10	3/8	40.9	17.2	7.9	18	17.1
10M-WCP-8-	10	1/2	46.5	17.2	7.9	22	21.3
12M-WCP-6-	12	3/8	43.4	22.8	9.5	22	17.1
12M-WCP-8-	12	1/2	49.0	22.8	9.5	22	21.3
14M-WCP-6-	14	3/8	44.1	24.2	10.7	24	17.1
16M-WCP-8-	16	1/2	49.0	24.4	12.7	24	21.3
18M-WCP-8-	18	1/2	50.5	24.4	13.9	27	21.3

* The E dimension is the minimum nominal opening.
These fittings may have a larger opening at the pipe/straight thread end.

TWIN FERRULE FITTINGS



**FLUIDFIT
ENGINEERS PVT. LTD.**

WELD CONNECTOR Fractional to Tube Socket Weld

FLUIDLOK	Tube	Socket	Dimensions (in)				
Part No.	OD	Weld	A	B	D	E	J
2-WCS-2-	1/8	1/8	1.14	0.25	0.50	0.09	0.29
4-WCS-4-	1/4	1/4	1.32	0.31	0.60	0.19	0.48
6-WCS-6-	3/8	3/8	1.48	0.38	0.66	0.28	0.60
8-WCS-8-	1/2	1/2	1.62	0.05	0.90	0.41	0.73
12-WCS-12-	3/4	3/4	1.71	0.56	0.96	0.62	1.04
16-WCS-16-	1	1	2.07	0.75	1.23	0.88	1.36

FEMALE CONNECTOR Fractional to NPT Thread

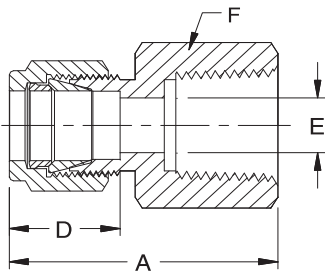
FLUIDLOK	Tube	NPT	Dimensions (in)			
Part No.	OD	Thread	A	D	E	F
2-FC-2N-	1/8	1/8	1.13	0.50	0.09	9/16
2-FC-4N-	1/8	1/4	1.32	0.50	0.09	3/4
4-FC-4N-	1/4	1/4	1.41	0.60	0.19	3/4
4-FC-6N-	1/4	3/8	1.48	0.60	0.19	7/8
6-FC-6N-	3/8	3/8	1.54	0.66	0.28	7/8
6-FC-SN-	3/8	1/2	1.73	0.66	0.28	1.1/16
8-FC-6N-	1/2	3/8	1.65	0.90	0.41	7/8
8-FC-8N-	1/2	1/2	1.84	0.90	0.41	1.1/16
8-FC-12N-	1/2	3/4	1.90	0.90	0.41	1.5/16
12-FC-8N-	3/4	1/2	1.84	0.96	0.62	1.1/16
12-FC-12N-	3/4	3/4	1.90	0.96	0.62	1.5/16
16-FC-12N-	1	3/4	2.10	1.23	0.88	1.3/8
16-FC-16N-	1	1	2.45	1.23	0.88	1.5/8

FEMALE CONNECTOR Metric to Fractional

FLUIDLOK	Tube	NPT	Dimensions (mm)			
Part No.	OD	Thread	A	D	E	F
4M-FC-2N-	4	1/8	29.7	13.7	2.4	14
6M-FC-4N-	6	1/4	35.8	15.3	4.8	19
6M-FC-6N-	6	3/8	37.6	15.3	4.8	22
6M-FC-8N-	6	1/2	42.5	15.3	4.8	27
8M-FC-4N-	8	1/4	37.0	16.2	6.4	19
8M-FC-6N-	8	3/8	38.5	16.2	6.4	22
8M-FC-8N-	8	1/2	43.3	16.2	6.4	27
10M-FC-6N-	10	3/8	39.4	17.2	7.9	22
10M-FC-8N-	10	1/2	44.2	17.2	7.9	27
12M-FC-6N-	12	3/8	41.9	22.8	9.5	22
12M-FC-8N-	12	1/2	46.7	22.8	9.5	27
16M-FC-8N-	16	1/2	46.9	24.4	12.7	27
20M-FC-8N-	20	1/2	47.9	26.0	15.9	30
20M-FC-12N	20	3/4	49.7	26.0	15.9	35
22M-FC-12N-	22	3/4	49.7	26.0	18.3	35
22M-FC-16N-	22	1	57.9	26.0	18.3	41
25M-FC-12N-	25	3/4	53.4	31.3	21.8	35
25M-FC-16N-	25	1	62.3	31.3	21.8	41

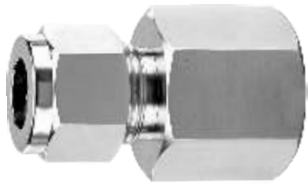
TWIN FERRULE FITTINGS

FLUIDLOK



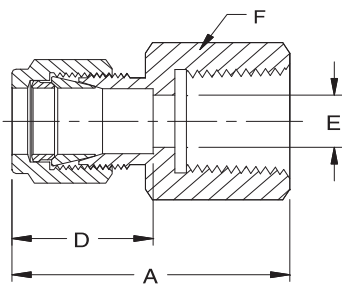
FEMALE CONNECTOR Fractional to ISO Tapered / RT Thread

FLUIDLOK	Tube	BSPT	Dimensions (in)			
Part No.	OD	Thread	A	D	E	F
2-FC-2IT-	1/8	1/8	1.13	0.50	0.09	9/16
4-FC-2IT-	1/4	1/8	1.23	0.60	0.19	9/16
4-FC-4IT-	1/4	1/4	1.41	0.60	0.19	3/4
4-FC-6IT-	1/4	3/8	1.48	0.60	0.19	7/8
6-FC-6IT-	3/8	3/8	1.54	0.66	0.28	7/8
6-FC-8IT-	3/8	1/2	1.73	0.66	0.28	11/16
8-FC-6IT-	1/2	3/8	1.65	0.90	0.41	7/8
8-FC-8IT-	1/2	1/2	1.84	0.90	0.41	11/16



FEMALE CONNECTOR Metric to ISO Tapered / RT Thread

FLUIDLOK	Tube	BSPT	Dimensions (mm)			
Part No.	OD	Thread	A	D	E	F
8M-FC-4IT-	8	1/4	37.0	16.2	6.4	19
8M-FC-6IT-	8	3/8	38.5	16.2	6.4	22
10M-FC-6IT-	10	3/8	39.4	17.2	7.9	22
10M-FC-8IT-	10	1/2	44.2	17.2	7.9	27
12M-FC-6IT-	12	3/8	41.9	22.8	9.5	22
12M-FC-8IT-	12	1/2	46.7	22.8	9.5	27
20M-FC-8IT-	20	1/2	47.9	26.0	15.9	30
20M-FC-12IT-	20	3/4	49.7	26.0	15.9	35
22M-FC-12IT-	22	3/4	47.9	26.0	18.3	35
22M-FC-16IT-	22	1	57.9	26.0	18.3	41
25M-FC-12IT-	25	3/4	53.4	31.3	21.8	35
25M-FC-16IT-	25	1	62.3	31.3	21.8	41



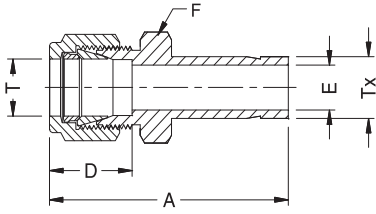
FEMALE CONNECTOR Fractional to ISO Parallel / RS Thread

FLUIDLOK	Tube	BSPP	Dimensions (in)			
Part No.	OD	Thread	A	D	E	F
4-FC-4IP-	1/4	1/4	1.48	0.60	0.18	3/4
6-FC-6IP-	3/8	3/8	1.52	0.66	0.26	15/16
6-FC-SIP-	3/8	1/2	1.65	0.66	0.28	11/16
8-FC-6IP-	1/2	3/8	1.75	0.90	0.26	15/16
S-FC-8IP-	1/2	1/2	1.90	0.90	0.28	11/16

FEMALE CONNECTOR Metric to ISO Parallel / RS Thread

FLUIDLOK	Tube	BSPP	Dimensions (mm)			
Part Number	OD	Thread	A	D	E	F
6M-FC-6IP-	6	3/8	37.6	15.3	4.8	24
8M-FC-6IP-	8	3/8	36.2	16.2	6.5	24
8M-FC-8IP-	8	1/2	41.0	16.2	7.0	27
10M-FC-6IP-	10	3/8	38.8	17.2	6.5	24
10M-FC-8IP-	10	1/2	42.1	17.2	7.0	27
12M-FC-6IP-	12	3/8	44.4	22.8	6.5	24
12M-FC-8IP-	12	1/2	48.2	22.8	7.0	27

TWIN FERRULE FITTINGS



REDUCER Fractional

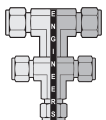
FLUIDLOK Part No.	Tube OD		Dimensions (in)			
	T	TX	A	13	E	F
2-R-2-	1/8	1/8	1.32	0.50	0.08	7/16
2-R-4-	1/8	1/4	1.42	0.50	0.09	7/16
4-R-4-	1/4	1/4	1.54	0.60	0.17	1/2
4-R-6-	1/4	3/8	1.60	0.60	0.19	1/2
6-R-6-	3/8	3/8	1.70	0.66	0.27	5/8
6-R-8-	3/8	1/2	1.91	0.66	0.28	5/8
8-R-8-	1/2	1/2	2.06	0.90	0.37	13/16
8-R-12-	1/2	3/4	2.12	0.90	0.41	13/16
12-R-8-	3/4	1/2	2.15	0.96	0.37	11/16
12-R-16-	3/4	1	2.46	0.96	0.62	11/16

REDUCER Metric

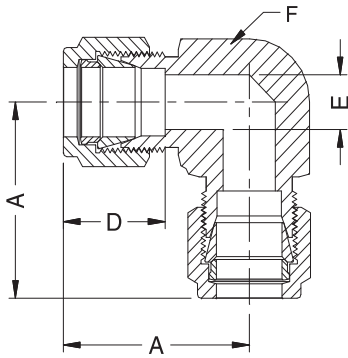
FLUIDLOK Part No.	Tube OD		Dimensions (mm)			
	T	TX	A	D	E	F
8M-R-6M-	8	6	40.3	16.2	4.1	15
8M-R-10M-	8	10	42.0	16.2	6.4	15
8M-R-12M-	8	12	47.6	16.2	6.4	15
10M-R-8M-	10	8	43.4	17.2	5.6	18
10M-R-12M-	10	12	49.8	17.2	7.9	18
12M-R-10M-	12	10	46.7	22.8	7.1	22
12M-R-16M-	12	16	53.8	22.8	9.5	22
16M-R-12M-	16	12	53.0	24.4	8.8	24
18M-R-16M-	18	16	56.1	24.4	12.0	27
18M-R-20M-	18	20	57.6	24.4	15.1	27
20M-R-18M-	20	18	57.9	26.0	13.9	30
20M-R-22M-	20	22	59.4	26.0	15.9	30
22M-R-20M-	22	20	59.4	26.0	15.5	30
22M-R-25M-	22	25	64.2	26.0	18.3	30
25M-R-18M-	25	18	63.1	31.3	13.9	35
25M-R-20M-	25	20	64.6	31.3	15.5	35

REDUCER Metric to Fractional

FLUIDLOK Part No.	Tube OD		Dimensions (mm)			
	T (mm)	Tx (in)	A	D	E	F
4M-R-4-	4	1/4	37.1	13.7	2.4	12
6M-R-4-	6	1/4	39.2	15.3	4.4	14
6M-R-6-	6	3/8	40.7	15.3	4.8	14
8M-R-6-	8	3/8	42.0	16.2	6.4	15
8M-R-8-	8	1/2	47.6	16.2	6.4	15
10M-R-6-	10	3/8	44.2	17.2	6.8	18
10M-R-8-	10	1/2	49.8	17.2	7.9	18
12M-R-8-	12	1/2	52.3	22.8	9.3	22
12M-R-12-	12	3/4	53.8	22.8	9.5	22
18M-R-12-	18	3/4	56.1	24.4	14.7	27
25M-R-16-	25	1	69.5	31.3	20.2	35



TWIN FERRULE FITTINGS



UNION ELBOW Fractional to Fractional

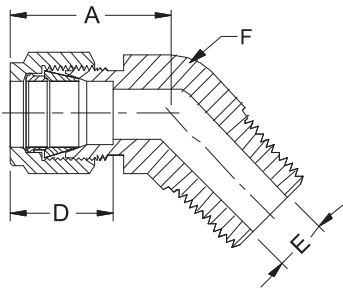
FLUIDLOK	Tube	Dimensions (in)			
Part No.	OD	A	D	E	F
1-UE-	1/16	0.70	0.34	0.05	3/8
2-UE-	1/8	0.88	0.50	0.09	3/8
3-UE-	3/16	1.00	0.54	0.12	1/2
4-UE-	1/4	1.06	0.60	0.19	1/2
5-UE-	5/16	1.13	0.64	0.25	9/16
6-UE-	3/8	1.20	0.66	0.28	5/8
8-UE-	1/2	1.42	0.90	0.41	13/16
10-UE-	5/8	1.50	0.96	0.50	15/16
12-UE-	3/4	1.57	0.96	0.62	11/16
14-UE-	7/8	1.76	1.02	0.72	13/8
16-UE-	1	1.93	1.23	0.88	13/8

UNION ELBOW Metric to Metric



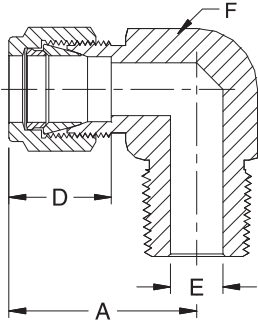
FLUIDLOK	Tube	Dimensions (mm)			
Part No.	OD	A	D	E	F
4M-UE-	4	25.4	13.7	2.4	1/2
6M-UE-	6	27.0	15.3	4.8	1/2
8M-UE-	8	28.8	16.2	6.4	9/16
10M-UE-	10	31.5	17.2	7.9	11/16
12M-UE-	12	36.0	22.8	9.5	13/16
14M-UE-	14	38.0	24.4	11.1	15/16
16M-UE-	16	38.0	24.4	12.7	15/16
18M-UE-	18	39.8	24.4	15.1	11/16
20M-UE-	20	44.6	26.0	15.9	13/8
22M-UE-	22	44.6	26.0	18.3	13/8
25M-UE-	25	49.1	31.3	21.8	13/8

MALE 45° ELBOW Fractional to NPT Thread



FLUIDLOK	Tube	NPT	Dimensions (in)			
Part No.	OD	Thread	A	D	E*	F
4-M45E-2N-	1/4	1/8	0.97	0.60	0.19	1/2
4-M45E--4N-	1/4	1/4	0.97	0.60	0.19	1/2
6-M45E--4N-	3/8	1/4	1.10	0.66	0.28	5/8
6-M45E-6N-	3/8	3/8	1.15	0.66	0.28	13/16
8-M45E-8N-	1/2	1/2	1.26	0.90	0.41	13/16
12-M45E-12N-	3/4	3/4	1.33	0.96	0.62	11/16
16-M45E-16N-	1	1	1.59	1.23	0.88	13/8

TWIN FERRULE FITTINGS

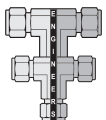


MALE ELBOW Fractional to NPT Thread

FLUIDLOK Part No.	Tube OD	NPT Thread	Dimensions (in)			
			A	D	E*	F
2-ME-2N-	1/8	1/8	0.93	0.50	0.09	7/16
2-ME-4N-	1/8	1/4	0.97	0.50	0.09	1/2
4-ME-2N-	1/4	1/8	1.06	0.60	0.19	1/2
4-ME-4N-	1/4	1/4	1.06	0.60	0.19	1/2
4-ME-6N-	1/4	3/8	1.17	0.60	0.19	11/16
6-ME-4N-	3/8	1/4	1.20	0.66	0.28	5/8
6-ME-6N-	3/8	3/8	1.23	0.66	0.28	11/16
6-ME-8N-	3/8	1/2	1.31	0.66	0.28	13/16
8-ME-4N-	1/2	1/4	1.42	0.90	0.28	13/16
8-ME-6N-	1/2	3/8	1.42	0.90	0.38	13/16
8-ME-8N-	1/2	1/2	1.42	0.90	0.41	13/16
8-ME-12N-	1/2	3/4	1.57	0.90	0.41	11/16
12-ME-8N-	3/4	1/2	1.57	0.96	0.47	11/16
12-ME-12N-	3/4	3/4	1.57	0.96	0.62	11/16
16-ME-12N-	1	3/4	1.93	1.23	0.62	13/8
16-ME-16N-	1	1	1.93	1.23	0.88	13/8

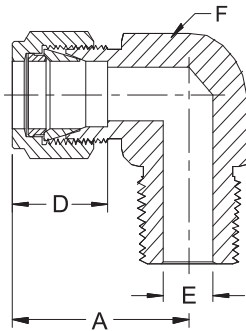
MALE ELBOW Metric to NPT Thread

FLUIDLOK Part No.	Tube OD	NPT Thread	Dimensions (mm)			
			A	D	E*	F
4M-ME-2N-	4	1/8	25.4	13.7	2.4	1/2
4M-ME-4N	4	1/4	25.4	13.7	2.4	1/2
6M-ME-4N	6	1/4	27.0	15.3	4.8	1/2
6M-ME-6N	6	3/8	29.8	15.3	4.8	11/16
6M-ME-8N	6	1/2	31.8	15.3	4.8	13/16
8M-ME-4N	8	1/4	28.8	16.2	6.4	9/16
8M-ME-6N	8	3/8	30.6	16.2	6.4	11/16
8M-ME-8N	8	1/2	32.6	16.2	6.4	13/16
10M-ME-6N-	10	3/8	31.5	17.2	7.9	11/16
10M-ME-8N-	10	1/2	33.5	17.2	7.9	13/16
12M-ME-6N-	12	3/8	36.0	22.8	9.5	13/16
12M-ME-8N-	12	1/2	36.0	22.8	9.5	13/16
16M-ME-6N-	16	3/8	38.0	24.4	9.5	15/16
16M-ME-8N-	16	1/2	38.0	24.4	11.9	15/16
18M-ME-8N-	18	1/2	39.8	24.4	11.9	11/16
18M-ME-12N-	18	3/4	39.8	24.4	15.1	11/16
20M-ME-8N-	20	1/2	44.6	26.0	11.9	13/8
20M-ME-12N	20	3/4	44.6	26.0	15.9	13/8
22M-ME-12N-	22	3/4	44.6	26.0	15.9	13/8
22M-ME-16N-	22	1	44.6	26.0	18.3	13/8
25M-ME-12N-	25	3/4	49.1	31.3	15.9	13/8
25M-ME-16N-	25	1	49.1	31.3	21.8	13/8



**FLUIDFIT
ENGINEERS PVT. LTD.**

* The E dimension is the minimum nominal opening.
These fittings may have a larger opening at the pipe/straight thread end.



MALE ELBOW Fractional to ISO Tapered / RT Thread

FLUIDLOK	Tube	BSPT	Dimensions (in)			
Part No.	OD	Thread	A	D	E*	F
2-ME-2IT-	1/8	1/8	0.83	0.50	0.09	7/16
2-ME-4IT-	1/8	1/4	0.97	0.50	0.09	1/2
4-ME-2IT-	1/4	1/8	1.06	0.60	0.19	1/2
4-ME-4IT-	1/4	1/4	1.06	0.60	0.19	1/2
4-ME-6IT-	1/4	3/8	1.17	0.60	0.19	11/16
6-ME-4IT-	3/8	1/4	1.20	0.66	0.28	5/8
6-ME-6IT-	3/8	3/8	1.23	0.66	0.28	11/16
8-ME-6IT-	1/2	3/8	1.42	0.90	0.38	13/16
8-ME-8IT-	1/2	1/2	1.42	0.90	0.38	13/16
12-ME-8IT-	3/4	1/2	1.57	0.96	0.47	13/8
16-ME-16IT-	1	1	1.93	1.23	0.88	13/8

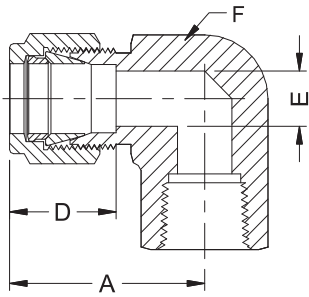
MALE ELBOW Metric to ISO Tapered / RT Thread



FLUIDLOK	Tube	BSPT	Dimensions (mm)			
Part No.	OD	Thread	A	D	E*	F
4M-ME-2IT-	4	1/8	25.4	13.7	2.4	1/2
4M-ME-4IT-	4	1/4	25.4	13.7	2.4	1/2
6M-ME-4IT-	6	1/4	27.0	15.3	4.8	1/2
6M-ME-6IT-	6	3/8	29.8	15.3	4.8	11/16
6M-ME-8IT-	6	1/2	31.8	15.3	4.8	13/16
8M-ME-4IT-	8	1/4	28.8	16.2	6.4	9/16
8M-ME-6IT-	8	3/8	30.6	16.2	6.4	11/16
8M-ME-8IT-	8	1/2	32.6	16.2	6.4	13/16
10M-ME-6IT-	10	3/8	31.5	17.2	7.9	11/16
10M-ME-8IT-	10	1/2	33.5	17.2	7.9	13/16
12M-ME-6IT-	12	3/8	36.0	22.8	9.5	13/16
12M-ME-8IT-	12	1/2	36.0	22.8	9.5	13/16
14M-ME-8IT-	14	1/2	38.1	24.4	11.1	15/16
16M-ME-6IT-	16	3/8	38.0	24.4	9.5	15/16
16M-ME-8IT-	16	1/2	38.0	24.4	11.9	15/16
18M-ME-8IT-	18	1/2	39.8	24.4	11.9	11/16
18M-ME-12IT-	18	3/4	39.8	24.4	15.1	11/16
20M-ME-8IT-	20	1/2	44.6	26.0	11.9	13/8
20M-ME-12IT-	20	3/4	44.6	26.0	15.9	13/8
22M-ME-12IT-	22	3/4	44.6	26.0	15.9	13/8
22M-ME-16IT-	22	1	44.6	26.0	18.3	13/8
25M-ME-12IT-	25	3/4	49.1	31.3	15.9	13/8
25M-ME-16IT-	25	1	49.1	31.3	21.8	13/8

* The E dimension is the minimum nominal opening.
These fittings may have a larger opening at the pipe/straight thread end.

TWIN FERRULE FITTINGS



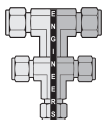
FEMALE ELBOW Fractional to NPT Thread

FLUIDLOK	Tube	NPT	Dimensions (in)			
Part No.	OD	Thread	A	D	E	F
2-FE-2N-	1/8	1/8	0.97	0.50	0.09	1/2
2-FE-4N-	1/8	1/4	1.08	0.50	0.09	11/16
4-FE-4N-	1/4	1/4	1.17	0.60	0.19	11/16
4-FE-6N-	1/4	3/8	1.25	0.60	0.19	13/16
6-FE-6N-	3/8	3/8	1.31	0.66	0.28	13/16
6-FE-8N-	3/8	1/2	1.42	0.66	0.28	1
8-FE-8N-	1/2	1/2	1.53	0.90	0.41	1
12-FE-8N-	3/4	1/2	1.57	0.96	0.62	11/16
12-FE-12N-	3/4	3/4	1.76	0.96	0.62	13/8
16-FE-12N-	1	3/4	1.93	1.23	0.88	13/8
16-FE-16N-	1	1	2.11	1.23	0.88	11/16



FEMALE ELBOW Metric to NPT Thread

FLUIDLOK	Tube	NPT	Dimensions (mm)			
Part No.	OD	Thread	A	D	E	F
6M-FE-4N-	6	1/4	29.8	15.3	4.8	11/16
8M-FE-4N-	8	1/4	30.6	16.2	6.4	11/16
10M-FE-4N-	10	1/4	33.5	17.2	7.9	13/16
12M-FE-4N-	12	1/4	36.0	22.8	9.5	13/16
12M-FE-8N-	12	1/2	38.8	22.8	9.5	1
16M-FE-8N-	16	1/2	39.5	24.4	12.7	11/16



TWIN FERRULE FITTINGS

FLUIDLOK

UNION TEE Fractional to Fractional

FLUIDLOK	Tube	Dimensions (in)				
Part No.	OD	A	Ax	D	E	F
1-UT-	1/16	1.40	0.70	0.34	0.05	3/8
2-UT-	1/8	1.76	0.88	0.50	0.09	3/8
3-UT-	3/16	1.92	0.96	0.54	0.12	7/16
4-UT-	1/4	2.12	1.06	0.60	0.19	1/2
5-UT-	5/16	2.34	1.17	0.64	0.25	5/8
6-UT-	3/8	2.40	1.20	0.66	0.28	5/8
8-UT-	1/2	2.84	1.42	0.90	0.41	13/16
10-UT-	5/8	3.06	1.53	0.96	0.50	1
12-UT-	3/4	3.14	1.57	0.96	0.62	1.1/16
14-UT-	7/8	3.52	1.76	1.02	0.72	1.3/8
16-UT-	1	3.86	1.93	1.23	0.88	1.3/8

UNION TEE Metric to Metric

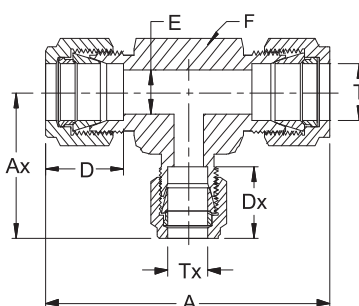
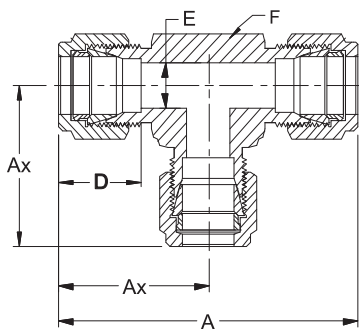
FLUIDLOK	Tube	Dimensions (in)				
Part No.	OD	A	Ax	D	E	F
4M-UT-	4	50.8	25.4	13.7	2.4	1/2
6M-UT-	6	53.9	27.0	15.3	4.8	1/2
8M-UT-	8	59.7	29.9	16.2	6.4	5/8
10M-UT-	10	63.0	31.5	17.2	7.9	11/16
12M-UT-	12	72.0	36.0	22.8	9.5	13/16
14M-UT-	14	77.6	38.8	24.4	11.1	1
16M-UT-	16	77.6	38.8	24.4	12.7	1
18M-UT-	18	79.6	38.8	24.4	15.1	1.1/16
20M-UT-	20	89.3	44.6	26.0	15.9	1.3/8
22M-UT-	22	89.3	46.6	26.0	18.3	1.3/8
25M-UT-	25	98.3	49.1	31.3	21.8	1.3/8

REDUCING UNION TEE Fractional to Fractional

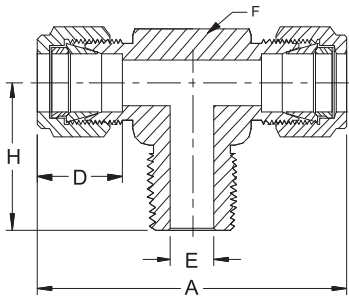
FLUIDLOK	Tube OD		Dimensions (in)					
Part No.	T	Tx	A	Ax	D	Dx	E	F
6-RUT-4-	3/8	1/4	2.40	1.14	0.66	0.60	0.19	5/8
8-RUT-4-	1/2	1/4	2.84	1.25	0.90	0.60	0.19	13/16
8-RUT-6-	1/2	3/8	2.84	1.31	0.90	0.66	0.28	13/16
12-RUT-6-	3/4	3/8	3.14	1.46	0.96	0.66	0.28	11/16
12-RUT-8-	3/4	1/2	3.14	1.57	0.96	0.90	0.41	11/16
16-RUT-8-	1	1/2	3.86	1.76	1.23	0.90	0.41	13/8
16-RUT-12-	1	3/4	3.86	1.76	1.23	0.96	0.62	13/8

REDUCING UNION TEE Metric to Metric

FLUIDLOK	Tube OD		Dimensions (mm)					
Part No.	T	Tx	A	Ax	D	Dx	E	F
8M-RUT-6M-	8	6	59.9	29.0	16.2	15.3	4.8	5/8
10M-RUT-6M-	10	6	63.0	29.7	17.2	15.3	4.8	11/16
16M-RUT-12M-	16	12	77.6	38.9	24.4	22.8	9.5	1
18M-RUT-12M-	18	12	79.8	39.9	24.4	22.8	9.5	1.1/16



TWIN FERRULE FITTINGS



MALE BRANCH TEE Fractional to NPT Thread

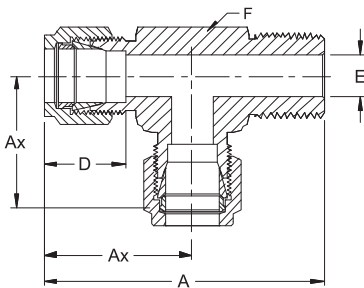
FLUIDLOK	Tube	NPT	Dimensions (in)				
Part No.	OD	Thread	A	D	E*	F	H
2-MBT-2N-	1/8	1/8	1.86	0.50	0.09	7/16	0.70
2-MBT-4N-	1/8	1/4	1.94	0.50	0.09	1/2	0.92
4-MBT-2N-	1/4	1/8	2.12	0.60	0.19	1/2	0.74
4-MBT-4N-	1/4	1/4	2.12	0.60	0.19	1/2	0.92
6-MBT-4N-	3/8	1/4	2.40	0.66	0.28	5/8	1.00
6-MBT-6N-	3/8	3/8	2.62	0.66	0.28	13/16	1.11
8-MBT-6N-	1/2	3/8	2.84	0.90	0.38	13/16	1.11
8-MBT-8N-	1/2	1/2	2.84	0.90	0.41	13/16	1.30
12-MBT-8N-	3/4	1/2	3.14	0.96	0.62	11/16	1.45

MALE BRANCH TEE Metric to NPT Thread

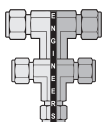


FLUIDLOK	Tube	NPT	Dimensions (mm)				
Part No.	OD	Thread	A	D	E*	F	H
6M-MBT-2N-	6	1/8	53.9	15.3	4.8	1/2	18.8
6M-MBT-4N-	6	1/4	53.9	15.3	4.8	1/2	23.4
8M-MBT-2N-	8	1/8	59.7	16.2	4.8	5/8	20.8
8M-MBT-8N-	8	1/2	59.7	16.2	6.4	5/8	25.4
10M-MBT-4N-	10	1/4	67.0	17.2	7.1	13/16	26.2
12M-MBT-4N-	12	1/4	72.0	22.8	7.1	13/16	28.2
12M-MBT-8N-	12	1/2	72.0	22.8	9.5	13/16	33.0
16M-MBT-8N-	16	1/2	77.6	24.4	11.9	1	35.8

MALE RUN TEE Fractional to NPT Thread



FLUIDLOK	Tube	NPT	Dimensions (in)				
Part No.	OD	Thread	A	Ax	D	E*	F
2-MRT-2N-	1/8	1/8	1.63	0.93	0.50	0.09	7/16
2-MRT-4N-	1/8	1/4	1.89	0.97	0.50	0.09	1/2
4-MRT-2N-	1/4	1/8	1.80	1.06	0.60	0.19	1/2
4-MRT-4N-	1/4	1/4	1.98	1.06	0.60	0.19	1/2
6-MRT-4N-	3/8	1/4	2.20	1.20	0.66	0.28	5/8
6-MRT-6N-	3/8	3/8	2.42	1.31	0.66	0.28	13/16
S-MRT-6N-	1/2	3/8	2.53	1.42	0.90	0.38	13/16
S-MRT-8N-	1/2	1/2	2.72	1.42	0.90	0.41	13/16

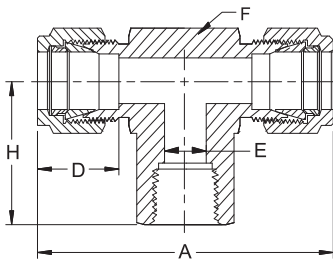


MALE RUN TEE Metric to NPT Thread

FLUIDLOK	Tube	NPT	Dimensions (mm)				
Part No.	OD	Thread	A	Ax	D	E*	F
6M-MRT-4N-	6	1/4	50.3	27.0	15.3	4.8	1/2
8M-MRT-4N-	8	1/4	55.3	29.9	16.2	6.4	5/8
12M-MRT-4N-	12	1/4	64.2	36.0	22.8	7.1	13/16
12M-MRT-8N-	12	1/2	69.0	36.0	22.8	9.5	13/16
16M-MRT-8N-	16	1/2	73.1	38.0	24.4	11.9	15/16

* The E dimension is the minimum nominal opening.
These fittings may have a larger opening at the pipe/straight thread end.

TWIN FERRULE FITTINGS



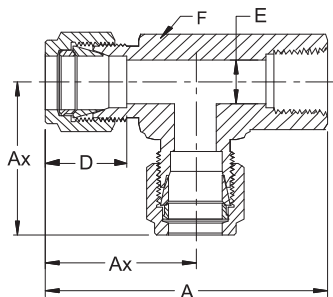
FEMALE BRANCH TEE Fractional to NPT Thread

FLUIDLOK	Tube	NPT	Dimensions (in)				
Part No.	OD	Thread	A	Ax	D	E*	F
4-FBT-2N-	1/4	1/8	2.12	0.60	0.16	1/2	1.04
4-FBT-4N-	1/4	1/4	2.28	0.60	0.19	5/8	1.27
6-FBT-4N-	3/8	1/4	2.40	0.66	0.23	5/8	1.27
8-FBT-6N-	1/2	3/8	2.84	0.90	0.41	13/16	1.46
8-FBT-8N-	1/2	1/2	3.00	0.90	0.41	15/16	1.71
12-FBT-8N-	3/4	1/2	3.14	0.96	0.47	11/16	1.78



FEMALE BRANCH TEE Metric to NPT Thread

FLUIDLOK	Tube	NPT	Dimensions (mm)				
Part No.	OD	Thread	A	Ax	D	E*	F
6M-FBT-2N-	6	1/8	53.9	15.3	4.0	1/2	26.4
6M-FBT-4N-	6	1/4	58.0	15.3	4.8	5/8	32.2
8M-FBT-2N-	8	1/8	57.7	16.2	4.0	9/16	28.4
8M-FBT-8N-	8	1/2	59.7	16.2	5.9	5/8	32.3
10M-FBT-4N-	10	1/4	67.0	17.2	5.9	13/16	35.1
12M-FBT-8N-	12	1/2	76.1	22.8	9.5	5/16	43.4



FEMALE RUN TEE Fractional to NPT Thread

FLUIDLOK	Tube	NPT	Dimensions (in)				
Part No.	OD	Thread	A	Ax	D	E	F
4-FRT-2N-	1/4	1/8	1.81	1.06	0.60	0.19	1/2
4-FRT-4N-	1/4	1/4	2.05	1.17	0.60	0.19	11/16
6-FRT-4N-	3/8	1/4	2.11	1.23	0.66	0.28	11/16
8-FRT-6N-	1/2	3/8	2.30	1.42	0.90	0.41	13/16
8-FRT-8N-	1/2	1/2	2.69	1.57	0.90	0.41	11/16

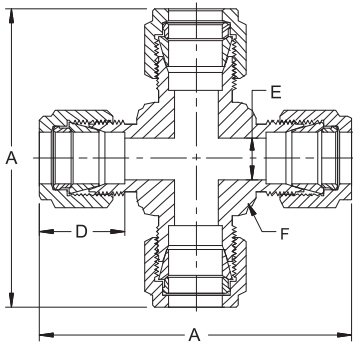


FEMALE RUN TEE Metric to NPT Thread

FLUIDLOK	Tube	NPT	Dimensions (mm)				
Part No.	OD	Thread	A	Ax	D	E	F
6M-FRT-4N-	6	1/4	52.1	29.8	15.3	4.8	11/16
8M-FRT-4N-	8	1/4	53.0	30.6	16.2	6.4	11/16
12M-FRT-4N-	12	1/4	58.4	36.0	22.8	9.5	13/16
12M-FRT-8N-	12	1/2	68.3	39.8	22.8	9.5	11/16
16M-FRT-8N-	16	1/2	68.2	39.8	24.4	12.7	11/16

* The E dimension is the minimum nominal opening.
These fittings may have a larger opening at the pipe/straight thread end.

TWIN FERRULE FITTINGS

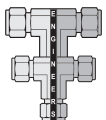


UNION CROSS Fractional to Fractional

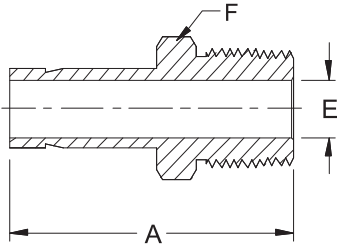
FLUIDLOK	Tube	Dimensions (in)		
Part No.	OD	A	D	E
2-UC-	1/8	1.76	0.50	0.09
4-UC-	1/4	2.21	0.60	0.19
6-UC-	3/8	2.04	0.66	0.28
8-UC-	1/2	2.84	0.90	0.41
12-UC-	3/4	3.14	0.96	0.62
16-UC-	1	3.86	1.23	0.88

UNION CROSS Metric to Metric

FLUIDLOK	Tube	Dimensions (mm)		
Part No.	OD	A	D	E
6M-UC-	6	53.9	15.3	4.8
8M-UC-	8	59.7	16.2	6.4
10M-UC-	10	67.0	17.2	7.9
12M-UC-	12	72.0	22.8	9.5
16M-UC-	16	74.0	24.4	12.7
18M-UC-	18	76.6	24.4	15.1
20M-UC-	20	89.3	26.0	15.9
22M-UC-	22	55.0	26.0	18.3
25M-UC-	25	98.3	31.3	21.8



* The E dimension is the minimum nominal opening.
These fittings may have a larger opening at the pipe/straight thread end.



TUBE ADAPTER MALE Fractional to NPT Thread

FLUIDLOK Part No.	Tube OD	NPT Thread	Dimensions (in)		
			A	E*	F
2-TAM-2N-	1/8	1/8	1.16	0.08	7/16
2-TAM-4N-	1/8	1/4	1.37	0.08	9/16
4-TAM-2N-	1/4	1/8	1.25	0.17	7/16
4-TAM-4N-	1/4	1/4	1.46	0.17	9/16
4-TAM-6N-	1/4	3/8	1.49	0.17	11/16
6-TAM-4N-	3/8	1/4	1.53	0.27	9/16
6-TAM-6N-	3/8	3/8	1.56	0.27	11/16
6-TAM-8N-	3/8	1/2	1.78	0.27	7/8
8-TAM-4N-	1/2	1/4	1.75	0.28	9/16
8-TAM-6N-	1/2	3/8	1.78	0.37	11/16
8-TAM-8N-	1/2	1/2	2.00	0.37	7/8
12-TAM-8N-	3/4	1/2	2.06	0.47	7/8
12-TAM-12N-	3/4	3/4	2.06	0.58	1.1/16
16-TAM-12N-	1	3/4	2.31	0.62	1.1/16
16-TAM-16N-	1	1	2.60	0.80	1.3/8

TUBE ADAPTER MALE Metric to NPT Thread



FLUIDLOK Part No.	Tube OD	NPT Thread	Dimensions (mm)		
			A	E*	F
6M-TAM-4N-	6	1/4	38.1	4.1	14
8M-TAM-4N-	8	1/4	39.1	6.2	14
8M-TAM-6N-	8	3/8	39.9	6.2	19
10M-TAM-6N-	10	3/8	40.6	7.1	18
10M-TAM-8N-	10	1/2	46.2	7.1	22
12M-TAM-6N-	12	1/4	46.5	7.1	16
12M-TAM-8N-	12	1/2	52.1	9.1	22

TUBE ADAPTER MALE Fractional to ISO Tapered / RT Thread

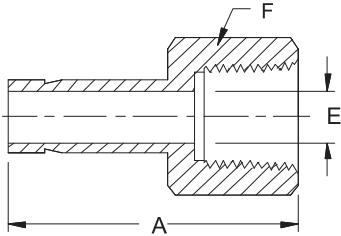
FLUIDLOK Part No.	Tube OD	BSPT Thread	Dimensions (in)		
			A	E*	F
2-TAM-2IT-	1/8	1/8	1.16	0.08	7/16
2-TAM-4IT-	1/8	1/4	1.37	0.08	9/16
4-TAM-2IT-	1/4	1/8	1.25	0.17	7/16
4-TAM-4IT-	1/4	1/4	1.46	0.17	9/16
6-TAM-6IT-	3/8	3/8	1.56	0.27	11/16
6-TAM-8IT-	3/8	1/2	1.78	0.27	7/8
8-TAM-6IT-	1/2	3/8	1.78	0.37	11/16
8-TAM-8IT-	1/2	1/2	2.00	0.37	7/8
12-TAM-12IT-	3/4	3/4	2.06	0.58	1.1/16
16-TAM-16IT-	1	1	2.60	0.80	1.3/8

TUBE ADAPTER MALE Metric to ISO Tapered / RT Thread

FLUIDLOK Part No.	Tube OD	BSPT Thread	Dimensions (mm)		
			A	E*	F
6M-TAM-2IT-	6	1/8	32.8	4.1	12
6M-TAM-4IT-	6	1/4	38.1	4.1	14
8M-TAM-4IT-	8	1/4	39.1	5.6	14
10M-TAM-4IT-	10	1/4	39.9	7.1	14
10M-TAM-6IT-	10	3/8	40.6	7.1	18
12M-TAM-6IT-	12	3/8	46.2	9.1	18
12M-TAM-8IT-	12	1/2	51.8	9.1	22

* The E dimension is the minimum nominal opening. These fittings may have a larger opening at the pipe/straight thread end.

TWIN FERRULE FITTINGS



TUBE ADAPTER FEMALE Fractional to NPT Thread

FLUIDLOK Part No.	Tube OD	NPT Thread	Dimensions (in)		
			A	E	F
2-TAF-2N-	1/8	1/8	1.24	0.08	9/16
2-TAF-4N-	1/8	1/4	1.39	0.08	3/4
4-TAF-2N-	1/4	1/4	1.46	0.19	3/4
4-TAF-4N-	1/4	3/8	1.55	0.19	7/8
6-TAF-6N-	3/8	3/8	1.59	0.27	7/8
6-TAF-8N-	3/8	1/2	1.84	0.27	11/16
8-TAF-6N-	1/2	3/8	1.79	0.39	7/8
8-TAF-8N-	1/2	1/2	2.05	0.39	11/16
12-TAF-12N-	3/4	3/4	2.16	0.58	15/16
16-TAF-16N-	1	1	2.53	0.80	15/8

TUBE ADAPTER FEMALE Metric to NPT Thread

FLUIDLOK Part No.	Tube OD	NPT Thread	Dimensions (mm)		
			A	E	F
6M-TAF-2N-	6	1/8	32.5	4.8	14
8M-TAF-4N-	8	1/4	37.6	6.4	19
10M-TAF-6N-	10	3/8	40.1	7.7	22



TUBE ADAPTER FEMALE Fractional to ISO Tapered / RT Thread

FLUIDLOK Part No.	Tube OD	BSPT Thread	Dimensions (in)		
			A	E	F
4-TAF-2IT-	1/4	1/8	1.30	0.14	9/16
4-TAF-4IT-	1/4	1/4	1.45	0.14	3/4
6-TAF-4IT-	3/8	1/4	1.50	0.28	3/4
6-TAF-6IT-	3/8	3/8	1.59	0.28	7/8
8-TAF-6IT-	1/2	3/8	1.80	0.39	7/8
8-TAF-8IT-	1/2	1/2	2.05	0.39	1.1/16

TUBE ADAPTER FEMALE Metric to ISO Tapered / RT Thread

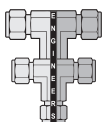
FLUIDLOK Part No.	Tube OD	BSPT Thread	Dimensions (mm)		
			A	E	F
6M-TAF-2IT-	6	1/8	33.0	4.1	14
8M-TAF-4IT-	8	1/4	37.6	5.6	19
10M-TAF-4IT-	10	1/4	38.1	7.1	19

TUBE ADAPTER FEMALE Fractional to ISO Parallel / RS Thread

FLUIDLOK Part No.	Tube OD	BSPP Thread	Dimensions (in)		
			A	E	F
4-TAF-2IP-	1/4	1/8	1.25	0.19	9/16
4-TAF-4IP-	1/4	1/4	1.50	0.19	3/4
6-TAF-4IP-	3/8	1/4	1.55	0.27	3/4
6-TAF-6IP-	3/8	3/8	1.57	0.27	15/16
8-TAF-6IP-	1/2	3/8	1.78	0.38	15/16
8-TAF-8IP-	1/2	1/2	2.02	0.38	1.1/16

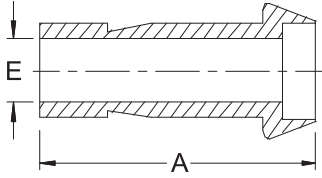
TUBE ADAPTER FEMALE Metric to ISO Parallel / RS Thread

FLUIDLOK Part No.	Tube OD	BSPP Thread	Dimensions (mm)		
			A	E	F
6M-TAF-2IP-	6	1/8	32.0	4.6	14
10M-TAF-4IP-	12	1/2	49.8	8.8	27



**FLUIDFIT
ENGINEERS PVT. LTD.**

TWIN FERRULE FITTINGS



PORT CONNECTOR Fractional

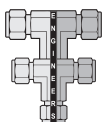
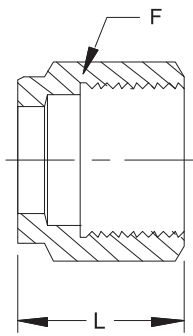
FLUIDLOK	Tube	Dimensions (in)	
Part No.	OD	E	A
2-PC-	1/8	0.09	0.88
4-PC-	1/4	0.19	0.98
5-PC-	5/16	0.25	1.02
6-PC-	3/8	0.30	1.05
8-PC-	1/2	0.37	1.43
10-PC-	5/8	0.47	1.49
12-PC-	3/4	0.59	1.49
16-PC-	1	0.80	1.89

PORT CONNECTOR Metric

FLUIDLOK	Tube	Dimensions (mm)	
Part Number	OD	E	A
8M-PC-	8	5.6	26.0
10M-PC-	10	7.1	27.1
12M-PC-	12	8.8	36.2
16M-PC-	16	12.0	37.8
18M-PC-	18	13.9	37.8
20M-PC-	20	15.5	39.4
25M-PC-	25	19.9	49.3



TWIN FERRULE FITTINGS



**FLUIDFIT
ENGINEERS PVT. LTD.**

NUT Fractional

FLUIDLOK Part No.	Tube OD	Dimensions (in)	
		F	L
1-N-	1/16	5/16	0.31
2-N-	1/8	7/16	0.47
3-N-	3/16	1/2	0.47
4-N-	1/4	9/16	0.50
5-N-	5/16	5/8	0.53
6-N-	3/8	11/16	0.56
8-N-	1/2	7/8	0.69
10-N-	5/8	1	0.69
12-N-	3/4	1.1/8	0.69
14-N-	7/8	1.1/4	0.69
16-N-	1	1.1/2	0.81

NUT Metric

FLUIDLOK Part No.	Tube OD	Dimensions (mm)	
		F	L
4M-N-	4	12	11.9
6M-N-	6	14	12.7
8M-N-	8	16	13.5
10M-N-	10	19	15.1
12M-N-	12	22	17.4
14M-N-	14	25	17.4
16M-N-	16	25	17.4
18M-N-	18	30	17.4
20M-N-	20	32	17.4
22M-N-	22	32	17.4
25M-N-	25	38	20.6

FRONT FERRULE Fractional

FLUIDLOK Part No.	Tube OD
1-FF-	1/16
2-FF-	1/8
3-FF-	3/16
4-FF-	1/4
5-FF-	5/16
6-FF-	3/8
8-FF-	1/2
10-FF-	5/8
12-FF-	3/4
14-FF-	7/8
16-FF-	1

FRONT FERRULE Metric

FLUIDLOK Part No.	Tube OD
4M-FF-	4
6M-FF-	6
8M-FF-	8
10M-FF-	10
12M-FF-	12
14M-FF-	14
16M-FF-	16
18M-FF-	18
20M-FF-	20
22M-FF-	22
25M-FF-	25

BACK FERRULE Fractional

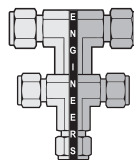
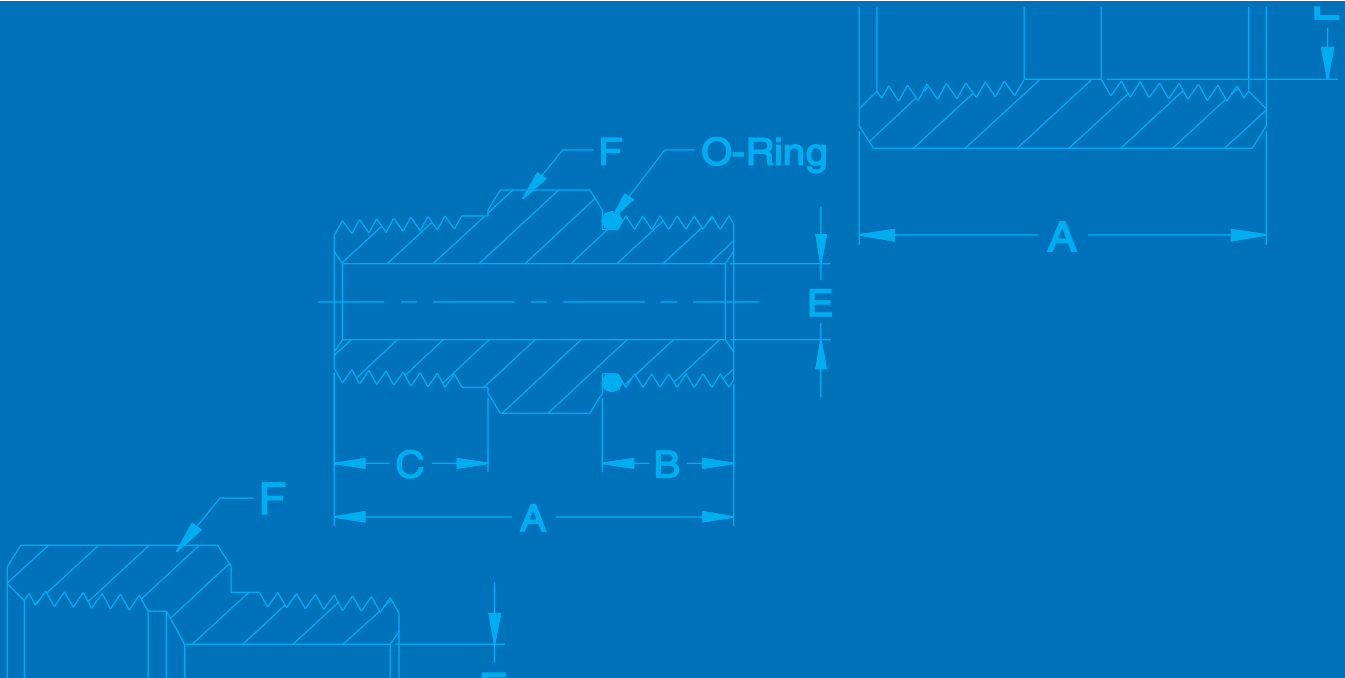
FLUIDLOK Part No.	Tube OD
1-BF-	1/16
2-BF-	1/8
3-BF-	3/16
4-BF-	1/4
5-BF-	5/16
6-BF-	3/8
8-BF-	1/2
10-BF-	5/8
12-BF-	3/4
14-BF-	7/8
16-BF-	1

BACK FERRULE Metric

FLUIDLOK Part No.	Tube OD
4M-BF-	4
6M-BF-	6
8M-BF-	8
10M-BF-	10
12M-BF-	12
14M-BF-	14
16M-BF-	16
18M-BF-	18
20M-BF-	20
22M-BF-	22
25M-BF-	25

FLUIDLOK

TWIN FERRULE FITTINGS



FLUIDFIT ENGINEERS PVT. LTD.

Unit #16, Supreme Industrial Estate, Near Bhajansons Diary, Kaman Bhiwandi Road,
Chinchoti Phata, Village Devdal, Vasai (E), India.

Tel : +91-9833852031 Fax: +91-22-23080308

E-mail : sales@fluidfitengg.com Web: www.fluidfitengg.com / www.valvesin.com

